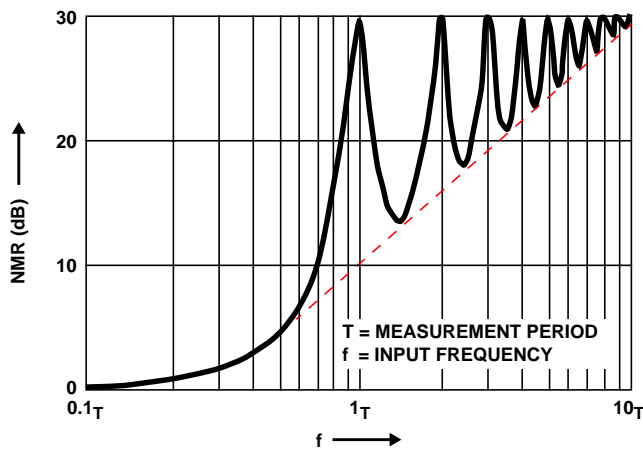


**Introduction**

Integrating A/D converters have two characteristics in common. First, as the name implies, their output represents the integral or average of an input voltage over a fixed period of time. Compared with techniques which require that the input is “frozen” with a sample-and-hold, the integrating converter will give repeatable results in the presence of high frequency noise (relative to the measurement period). A second and equally important characteristic is that they use time to quantize the answer, resulting in extremely small nonlinearity errors and no possibility of missing output codes. Furthermore, the integrating converter has very good rejection of frequencies whose periods are an integral multiple of the measurement period. This feature can be used to advantage in reducing line frequency noise, for example in laboratory instruments (Figure 1).



**FIGURE 1. NORMAL MODE REJECTION OF DUAL-SLOPE CONVERTER AS A FUNCTION OF FREQUENCY**

In addition, a competitive instrument-quality product should have the following features:

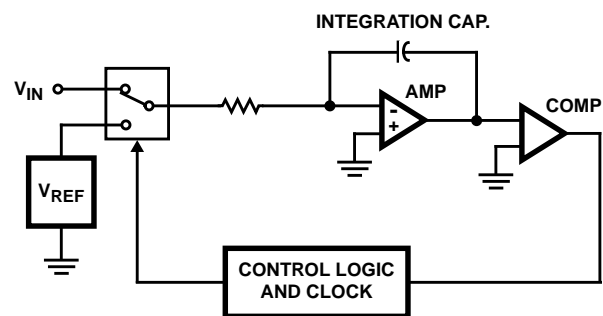
1. Single Reference Voltage. This is strictly a convenience to the user; but since many designs are available with single references that contribute negligible error, products requiring dual references are rapidly becoming obsolete.
2. Auto-Zero. This eliminates one trim-pot and a troublesome calibration step. Furthermore, it allows the manufacturer to use op amps with up to 10mV offset while still achieving system offsets of only a few microvolts.
3. High Input Impedance. Recently developed monolithic FET technology allows input impedances of 1000MΩ and leakages of a few pico amps to be achieved fairly readily.

The unique characteristics of the integrating converter have made it the natural choice for panel meters and digital voltmeter applications. For this reason, overall usage of integrating converters exceeds the combined total of all other conversion methods. Furthermore, the availability of low cost one chip converters will encourage digitizing at the sensor in applications such as process control. This represents a radical departure from traditional data logging techniques which in the past have relied heavily on the transmission of analog signals. The availability of one chip microprocessor system (with ROM and RAM on chip) will give a further boost to the ‘conversion at the sensor’ concept by facilitating local data processing. The advantage of local processing is that only essential data, such as significant changes or danger signals, will be transmitted to the central processor.

**The Dual Slope Technique - Theory and Practice**

The most popular integrating converter is the “dual-slope” type, the basic operating principles of which will be described briefly. However, most of the comments relating to linearity, noise rejection, auto-zero capability, etc., apply to the whole family of integrating designs including charge balancing, triple ramps, and the 101 other techniques that have appeared in the literature. A simplified dual-slope converter is shown in Figure 2.

The conversion takes place in three distinct phases (Figure 3).



**FIGURE 2. SIMPLIFIED DUAL-SLOPE CONVERTER**

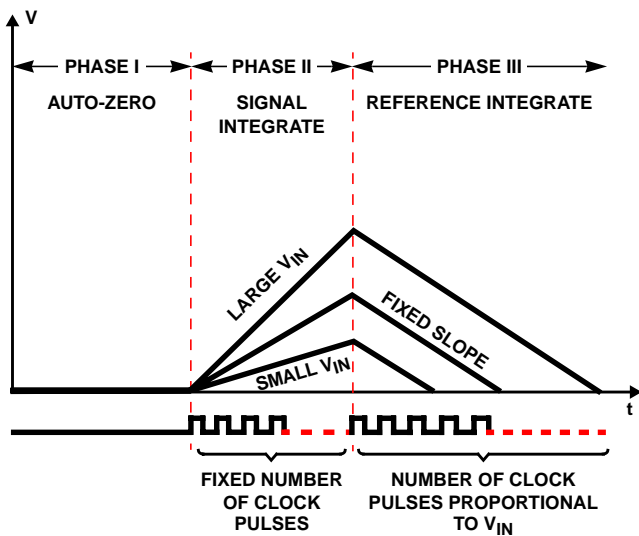


FIGURE 3. THE THREE PHASES OF DUAL-SLOPE CONVERSION

**Phase 1, Auto-Zero.** During auto-zero, the errors in the analog components (buffer offset voltages, etc.) will be automatically nulled out by grounding the input and closing a feedback loop such that error information is stored on an “auto-zero” capacitor.

**Phase 2, Signal Integrate.** The input signal is integrated for a fixed number of clock pulses. For a  $3^{1/2}$ -digit converter, 1,000 pulses is the usual count; for a  $4^{1/2}$ -digit converter, 10,000 is typical. On completion of the integration period, the voltage  $V$  in Figure 3 is directly proportional to the input signal.

**Phase 3, Reference Integrate.** At the beginning of this phase, the integrator input is switched from  $V_{IN}$  to  $V_{REF}$ . The polarity of the reference is determined during Phase 2 such that the integrator discharges back towards zero. The number of clock pulses counted between the beginning of this cycle and the time when the integrator output passes through zero is a digital measure of the magnitude of  $V_{IN}$ .

The beauty of the dual slope technique is that the theoretical accuracy depends only on the absolute value of the reference and the equality of the individual clock pulses within a given conversion cycle. The latter can easily be held to 1 part in 106, so in practical terms the only critical component is the reference. Changes in the value of other components such as the integration capacitor or the comparator input offset voltage have no effect, provided they don't change during an individual conversion cycle. This is in contrast to Successive Approximation converters which rely on matching a whole string of resistor values for quantization.

In a very real sense the designer is presented with a near perfect system; his job is to avoid introducing additional error

sources in turning this textbook circuit into a real piece of hardware.

From the foregoing discussion, it might be assumed that designing a high performance dual-slope converter is as easy as falling off the proverbial log. This is not true, however, because in a practical circuit a host of pitfalls must be avoided. These include the non-ideal characteristics of FET switches and capacitors, and the switching delay in the zero crossing detector.

### Analyzing the Errors

At this point it is instructive to perform a detailed error analysis of a representative dual slope circuit, Intersil's ICL7135. This is a  $4^{1/2}$ -digit design, as shown in Figure 4. The error analysis which follows relates to this chip - however, the principles behind the analysis apply to most integrating converters.

The analog section of the converter is shown in Figure 5. Typical values are shown for 120kHz clock and 3 measurements/second. Each measurement is divided into three parts. In part 1, the auto-zero FET switches 1, 2 and 3 are closed for 10,000 clock pulses. The reference capacitor is charged to  $V_{REF}$  and the auto-zero capacitor is charged to the voltage that makes  $dV/dt$  of the integrator equal to zero. In each instance the capacitors are charged for 20 or more time constants such that the voltage across them is only limited by noise.

In the second phase, signal integrate, switches 1, 2 and 3 are opened and switch 4 is closed for 10,000 clock pulses. The integrator capacitor will ramp up at a rate that is proportional to  $V_{IN}$ . In the final phase, de-integrate, switch 4 is opened and, depending on the polarity of the input signal, switch 5 or 6 is closed. In either case the integrator will ramp down at a rate that is proportional to  $V_{REF}$ . The amount of time, or number of clock pulses, required to bring the integrator back to its auto-zero value is 10,000

$$\left( \frac{V_{IN}}{V_{REF}} \right).$$

Of course, this is a description of the “ideal” cycle. Errors from this ideal cycle are caused by:

1. Capacitor droop due to leakage.
2. Capacitor voltage change due to charge “suck-out” (the reverse of charge injection) when the switches turn off.
3. Nonlinearity of buffer and integrator.
4. High-frequency limitations of buffer, integrator and comparator.
5. Integrating capacitor nonlinearity (dielectric absorption).
6. Charge lost by  $C_{REF}$  in charging  $C_{STRAY}$ .

Each of these errors will be analyzed for its error contribution to the converter.

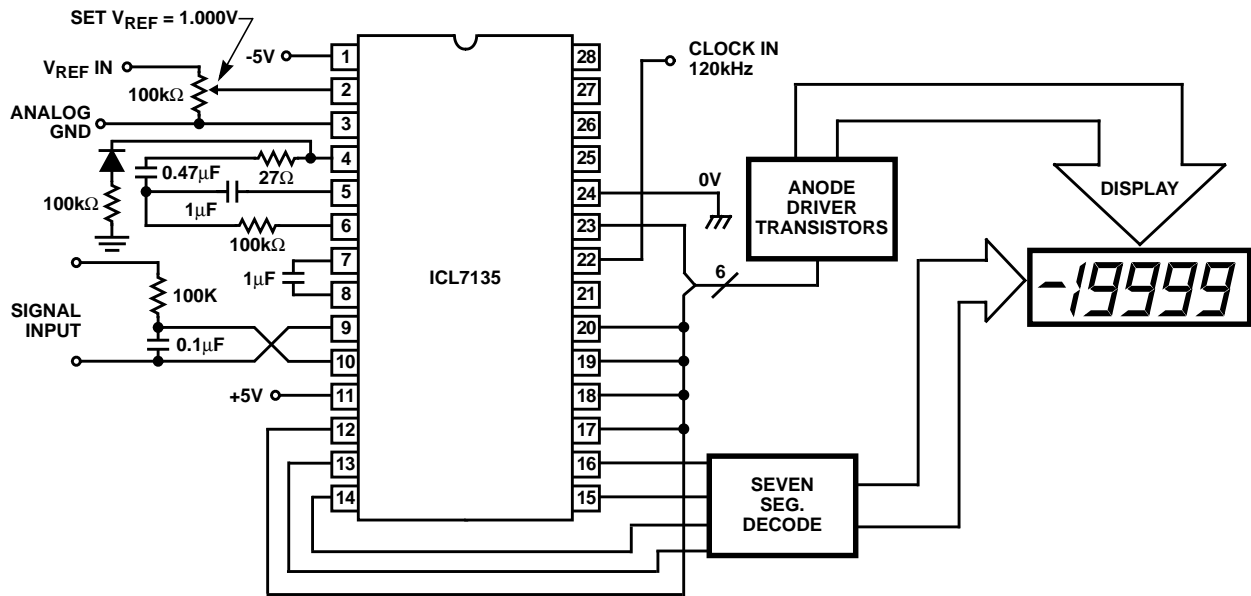


FIGURE 4. THE ICL7135 FUNCTIONAL DIAGRAM

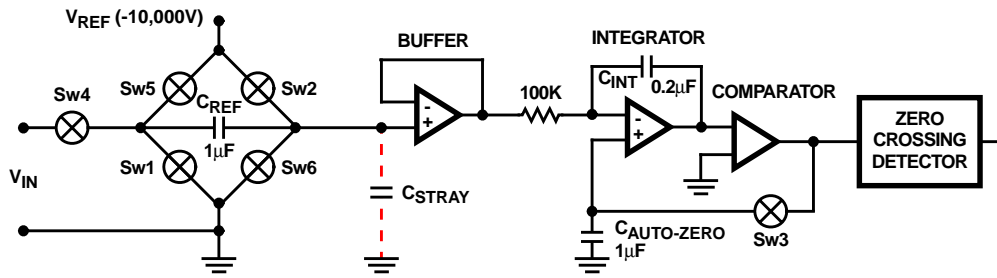


FIGURE 5. ANALOG SECTION OF A DUAL SLOPE CONVERTER

### Capacitor Droop Due to Leakage

Typical leakage ( $I_{DOFF}$ ) of the switches at normal operating voltage is 1pA each and 2pA at each input of the buffer and integrator op amps. In terms of offset voltage caused by capacitor droop, the effect of the auto-zero and reference capacitors is differential, i.e., there is no offset if they droop an equal amount. A conservative typical effect of droop on offset would be 2pA discharging 1μF for 83ms (10,000 clock periods), which amounts to an averaged equivalent of 0.83μV referred to the input. The effect of the droop on rollover error (difference between equal positive and negative voltages near full scale) is slightly different. For a negative input voltage, switch 5 is closed for the de-integrate cycle. Thus the reference capacitor and auto-zero capacitor operate differentially for the entire measurement cycle. For a positive voltage, switch 6 is closed and the differential compensation of the reference capacitor is lost during de-integrate. A typical contribution to rollover error is 3pA discharging 1μF capacitor for 166ms, equivalent to 0.249μV when averaged. These numbers are certainly insignificant for room

temperature leakages but even at 100°C the contributions should be only 15μV and 45μV respectively. A rollover error of 45μV is less than 0.5 counts on this 20,000 count instrument.

### Charge "Suck-Out" When the Switches Turn-Off

There is no problem in charging the capacitors to the correct value when the switches are on. The problem is getting the switches off without changing this value. As the gate is driven off, the gate-to-drain capacitance of the switch injects a charge on the reference or auto-zero capacitor, changing its value. The net charge injection of switch 3 turning off can be measured indirectly by noting the offset resulting by using a 0.01μF auto-zero capacitor instead of 1.0μF. For this condition the offset is typically 250μV, and since the signal ramp is a straight line instead of a parabola the main error is due to charge injection rather than leakage. This gives a net injected charge of 2.5pC or an equivalent  $C_{gd}$  of 0.16pF. The effect of switches 1, 2, 4, 5 and 6 are more complicated since they depend on timing and some switches are going on while others are going off. A substitution of an 0.01μF

capacitor for reference capacitor gives less than  $100\mu\text{V}$  offset error. Thus, a conservative typical offset error for a  $1.0\mu\text{F}$  capacitor is  $2.5\mu\text{V}$ . There is no contribution to rollover error (independent of offset). Also this value does not change significantly with temperature.

### **Nonlinearity of Buffer and Integrator**

In this converter, since the signal and reference are injected at the same point, the gain of the buffer and integrator are not of first-order importance in determining accuracy. This means that the buffer can have a very poor CMRR over the input range and still contribute zero error as long as it is constant, i.e., offset changes linearly with common mode voltage. The first error term is the nonlinear component of CMRR. Careful measurement of CMRR on 30 buffers indicated rollover errors from  $5\mu\text{V}$  to  $30\mu\text{V}$ . The contribution of integrator nonlinearity is less than  $1\mu\text{V}$  in each case.

### **High Frequency Limitations of Amplifiers**

For a zero input signal, the buffer output will switch from zero to  $V_{\text{REF}}$  ( $1.0\text{V}$ ) in  $0.5\mu\text{s}$  with an approximately linear response. The net result is to lose  $0.25\mu\text{s}$  of de-integrate period. For a  $120\text{kHz}$  clock, this is 3% of a clock pulse or  $3\mu\text{V}$ . This is not an offset error since the delay is equal for both positive and negative references. The net result is the converter would switch from 0 to 1 at  $97\mu\text{V}$  instead of  $100\mu\text{V}$  in the ideal case.

A much larger source of delay is the comparator which contributes  $3\mu\text{s}$ . At first glance, this sounds absolutely ridiculous compared to the few tens of nanoseconds delay of modern IC comparators. However, they are specified with 2 to  $10\text{mV}$  of overdrive. By the time the ICL7135 comparator gets  $10\text{mV}$  of overdrive, the integrator will have been through zero-crossing or 20 clock pulses! Actually, the comparator has a  $300\text{MHz}$  gain-bandwidth product which is comparable to the best ICs. The problem is that it must operate on  $30\mu\text{V}$  of overdrive instead of  $10\text{mV}$ . Again, this delay causes no offset error but means the converter switches from 0 to 1 at  $60\mu\text{V}$ , from 1 to 2 at  $160\mu\text{V}$ , etc. Most users consider this switching at approximately  $1/2$  LSB more desirable than the "so-called ideal" case of switching at  $100\mu\text{V}$ . If it is important that switching occur at  $100\mu\text{V}$ , the comparator delay may be compensated by including a small value resistor ( $\cong 20\Omega$ ) in series with the integration capacitor. (Further details of this technique are given on page 5 under the heading "Maximum Clock Frequency".) The integrator time delay is less than  $200\text{ns}$  and contributes no measurable error.

### **Integrating Capacitor Dielectric Absorption**

Any integrating A/D assumes that the voltage change across the capacitor is exactly proportional to the integral of the current into it. Actually, a very small percentage of this charge is "used up" in rearranging charges within the capacitor and does not appear as a voltage across the capacitor. This is dielectric absorption. Probably the most accurate means of measuring dielectric absorption is to use

it in a dual-slope A/D converter with  $V_{\text{IN}} \equiv V_{\text{REF}}$ . In this mode, the instrument should read 1.0000 independent of other component values. In very careful measurements where zero-crossings were observed in order to extrapolate a fifth digit and all delay errors were calculated out, polypropylene capacitors gave the best results. Their equivalent readings were 0.99998. In the same test polycarbonate capacitors typically read 0.9992, polystyrene 0.9997. Thus, polypropylene is an excellent choice since they are not expensive and their increased temperature coefficient is of no consequence in this circuit. The dielectric absorption of the reference and auto-zero capacitors are only important at power-on or when the circuit is recovering from an overload. Thus, smaller or cheaper capacitors can be used if very accurate readings are not required for the first few seconds of recovery.

### **Charge Lost by $C_{\text{REF}}$ in Charging $C_{\text{STRAY}}$**

In addition to leakage and switching charge injection, the reference capacitor has a third method of losing charge and, therefore, voltage. It must charge  $C_{\text{STRAY}}$  as it swings from 0 to  $V_{\text{IN}}$  to  $V_{\text{REF}}$  (Figure 5). However,  $C_{\text{STRAY}}$  only causes an error for positive inputs. To see why, let's look firstly at the sequence of events which occurs for negative inputs. During auto-zero  $C_{\text{REF}}$  and  $C_{\text{STRAY}}$  are both charged through the switches. When the negative signal is applied,  $C_{\text{REF}}$  and  $C_{\text{STRAY}}$  are in series and act as a capacitance divider. For  $C_{\text{STRAY}} = 15\text{pF}$ , the divider ratio is 0.999985. When the positive reference is applied through switch #5, the same divider operates. As mentioned previously, a constant gain network contributes no error and, thus, negative inputs are measured exactly.

For positive inputs, the divider operates as before when switching from auto-zero to  $V_{\text{IN}}$ , but the negative reference is applied by closing switch #6. The reference capacitor is not used, and therefore the equivalent divider network is 1.0000 instead of 0.999985. At full scale, this  $15\mu\text{V/V}$  error gives a  $30\mu\text{V}$  rollover error with the negative reading being  $30\mu\text{V}$  too low. Of course for smaller  $C_{\text{STRAY}}$ , the error is proportionally less.

### **Summary**

Error analysis of the circuit using typical values shows four types of errors. They are (1) an offset error of  $2.5\mu\text{V}$  due to charge injection, (2) a full scale rollover error of  $30\mu\text{V}$  due to  $C_{\text{STRAY}}$ , (3) a full scale rollover error of 5 to  $30\mu\text{V}$  due to buffer nonlinearity and (4) a delay error of  $40\mu\text{V}$  for the first count. These numbers are in good agreement with actual results observed for the ICL7135. Due to peak-to-peak noise of  $20\mu\text{V}$  around zero, it is possible only to say that any offsets are less than  $10\mu\text{V}$ . Also, the observed rollover error is typically  $1/2$  count ( $50\mu\text{V}$ ) with the negative reading larger than the positive. Finally, the transition from a reading of 0000 to 0001 occurs at  $50\mu\text{V}$ .

These figures illustrate the very high performance which can be expected from a well designed dual-slope circuit - performance figures which can be achieved with no tricky 'tweaking' of component values. Furthermore, the circuit includes desirable convenience features such as auto-zero, auto-polarity and a single reference.

### Maximum Clock Frequency

Because of the  $3\mu\text{s}$  delay in the comparator, the maximum recommended clock frequency is 160kHz. In the error analysis it was shown that under these conditions half of the first reference integrate period is lost in delay. This means that the meter reading will change from 0 to 1 at  $50\mu\text{V}$ , from 1 to 2 at  $150\mu\text{V}$ , etc. As was noted earlier, most users consider this transition at midpoint to be desirable. However, if the clock frequency is increased appreciably above 160kHz, the instrument will flash 1 on noise peaks even when the input is shorted.

The clock frequency may be extended above 160kHz, however, by using a low value resistor in series with the integration capacitor. The effect of the resistor is to introduce a small pedestal voltage on to the integrator output at the beginning of the reference integrate phase (Figure 6). By careful selection of the ratio between this resistor and the integrating resistor (a few tens of ohms in the recommended circuit), the comparator delay can be compensated and the maximum clock frequency extended by approximately a factor of 3. At higher frequencies, ringing and second order breaks will cause significant nonlinearities in the first few counts of the instrument.

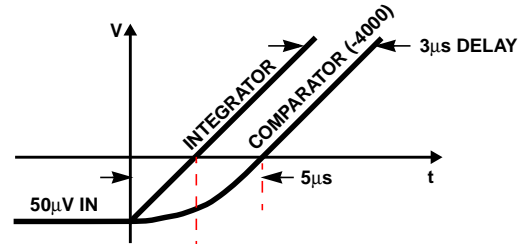


FIGURE 6A. UNCOMPENSATED

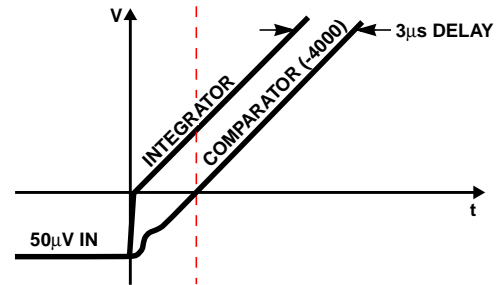


FIGURE 6B. COMPENSATED

FIGURE 6. INTEGRATOR AND COMPARATOR OUTPUTS FOR UNCOMPENSATED AND COMPENSATED SYSTEMS

### Noise

The peak-to-peak noise around zero is approximately  $20\mu\text{V}$  (peak-to-peak value not exceeded 95% of the time). Near full scale, this value increases to approximately  $40\mu\text{V}$ .

Since much of the noise originates in the auto-zero loop, some improvement in noise can be achieved by putting gain in the buffer. A gain of about 5X is optimum. Too much gain will cause the auto-zero switch to misbehave, because the amplified  $V_{OS}$  of the buffer will exceed the switch operating range.

All Intersil semiconductor products are manufactured, assembled and tested under **ISO9000** quality systems certification.

*Intersil semiconductor products are sold by description only. Intersil Corporation reserves the right to make changes in circuit design and/or specifications at any time without notice. Accordingly, the reader is cautioned to verify that data sheets are current before placing orders. Information furnished by Intersil is believed to be accurate and reliable. However, no responsibility is assumed by Intersil or its subsidiaries for its use; nor for any infringements of patents or other rights of third parties which may result from its use. No license is granted by implication or otherwise under any patent or patent rights of Intersil or its subsidiaries.*

For information regarding Intersil Corporation and its products, see web site [www.intersil.com](http://www.intersil.com)

### Sales Office Headquarters

#### NORTH AMERICA

Intersil Corporation  
P. O. Box 883, Mail Stop 53-204  
Melbourne, FL 32902  
TEL: (407) 724-7000  
FAX: (407) 724-7240

#### EUROPE

Intersil SA  
Mercure Center  
100, Rue de la Fusee  
1130 Brussels, Belgium  
TEL: (32) 2.724.2111  
FAX: (32) 2.724.22.05

#### ASIA

Intersil (Taiwan) Ltd.  
7F-6, No. 101 Fu Hsing North Road  
Taipei, Taiwan  
Republic of China  
TEL: (886) 2 2716 9310  
FAX: (886) 2 2715 3029